

DESCRIPTION OF HIGHLIGHTED SITE

Rockledge
Name

c1758
Date(s)

Elizabeth and Mill Streets, Occoquan, VA
Location

Prince William County
Jurisdiction

Description

A fire in January 1980 destroyed the interior of Rockledge, an imposing two-story stone residence, which rests on a rocky cliff above the Occoquan palisades. Rockledge is the oldest building in Occoquan, having been constructed in about 1758 by John Ballendine, a Prince William industrialist. The house may have been designed by William Buckland, the architect of Gunston Hall and of several noted residences in Annapolis. Rockledge, built along a central hall plan, has a Greek fret modillion cornice under its dormer-pierced gable roof. The interior, which had little or no original woodwork prior to the recent fire, did however contain handsome floors, with boards up to 18" wide. The 1½ story brick kitchen wing is a later addition. There is also a brick spring house with a working spring. When it was first built, Rockledge, located at the upper end of town on Elizabeth Street, overlooked the town's industrial sector, which by 1836 consisted of a large cotton manufactory and an extensive flour mill. Other mills, including a sawmill, iron furnace and forge, had also operated there. In the early 1800s, a bridge was erected across the Occoquan to Fairfax County at the end of Elizabeth Street, just past Rockledge and approximately where the foot bridge at the Fairfax County Water Authority's dam is

History

Rockledge's builder was the industrialist John Ballendine, whose mid-18th century milling activities on the Occoquan caused to be built there the town of Occoquan. Ballendine also had iron mining and forging interests on the Occoquan, and he promoted the improvement of navigation on the Potomac and the James Rivers. It is said of Ballendine, however, that many of his undertakings were at most only partial successes and were done frequently at the expense of other people's money.

The architect of Rockledge is thought to have been William Buckland, whom George Mason hired to design the interiors of Gunston Hall, erected 1755-1758. Buckland's other work in the area included Pohick Church and the William Paca and Hammond-Harwood Houses in Annapolis.

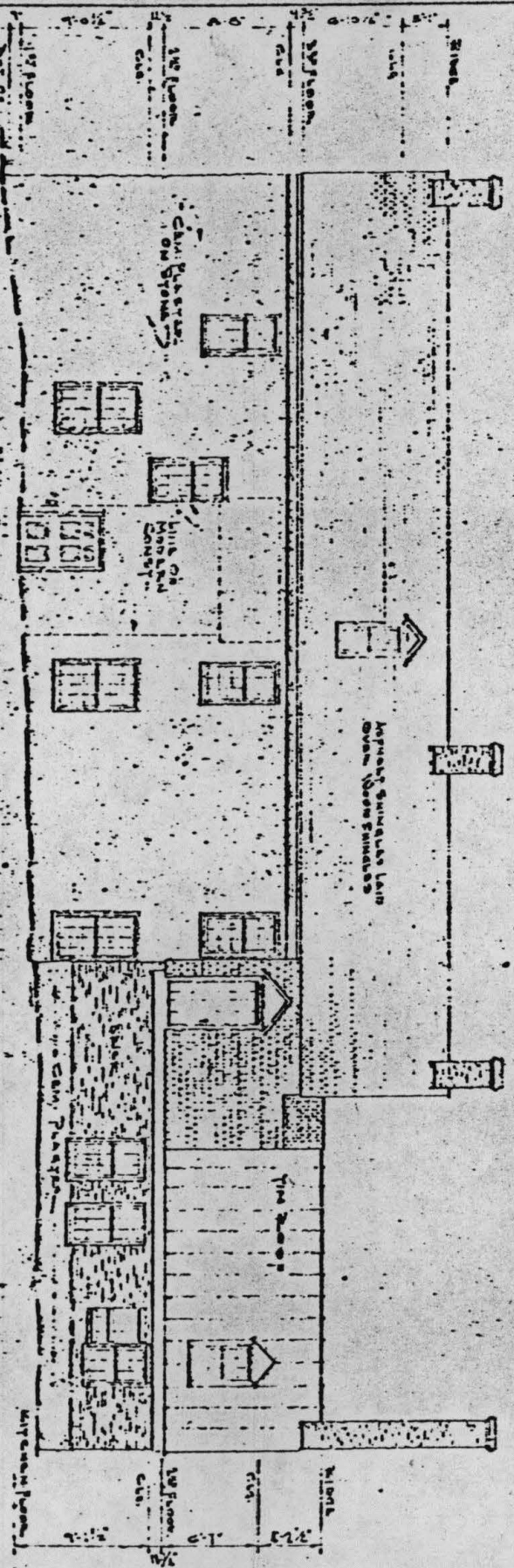
Description (continued)

now. Listed in both the Virginia State and National Registers, Rockledge, which prior to the fire had been extensively renovated, is also included in Historic American Buildings Surveys made during 1959 and 1960.



314

1965



WEST ELEVATION

Architectural drawing

STATE OF M. FEDTIS D.C.

MISSION TO PROTECT... TO CONSERVE...
 AUTHORITY DERIVED FROM THE NATIONAL ANTI-CORRUPTION ACT
 AND THE NATIONAL ARCHITECTURAL RECORD ACT

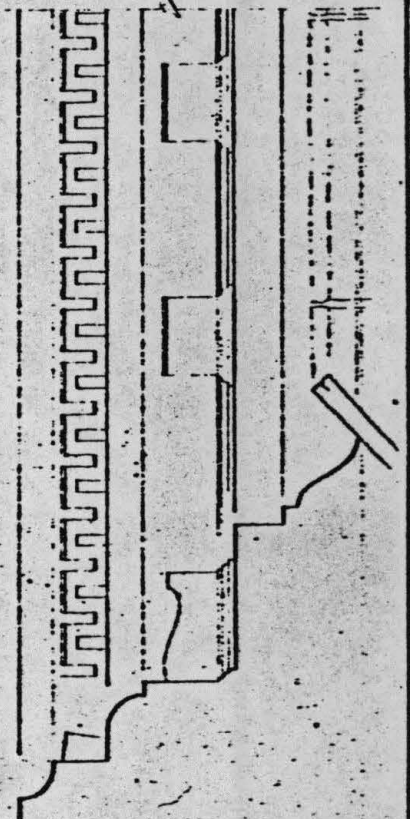
ROCKLEDGE

PRINCE WILLIAM COUNTY

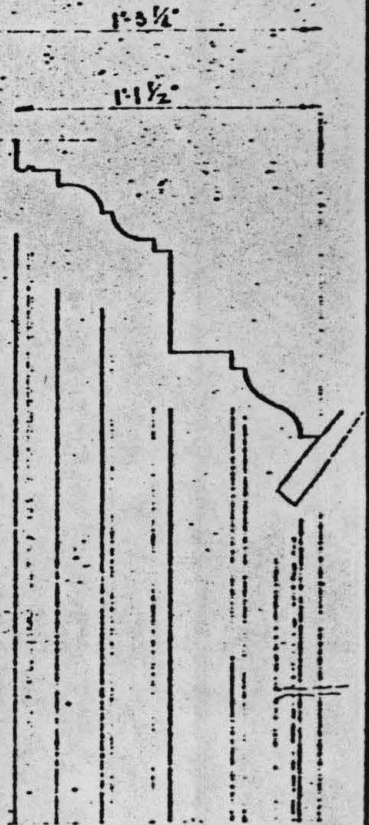
VIRGINIA

VA 577

HISTORIC AMERICAN
 BUILDINGS SURVEY
 SERIES OF 11 PARTS

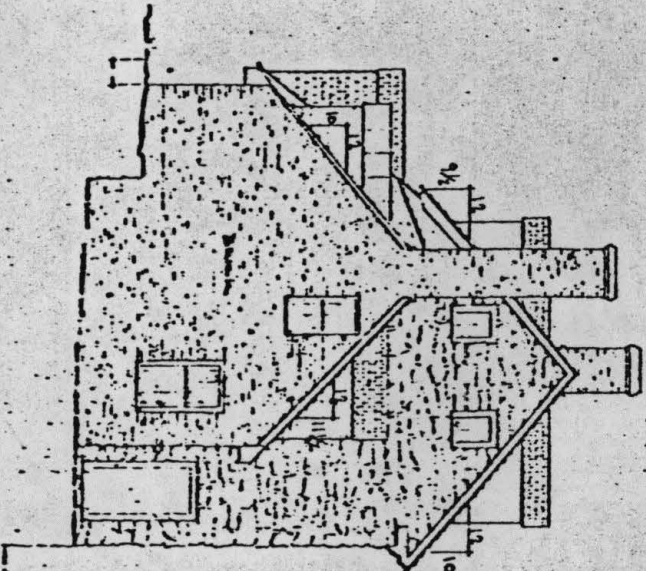


CORNICE: EAST ELEVATION (MAIN HOUSE)

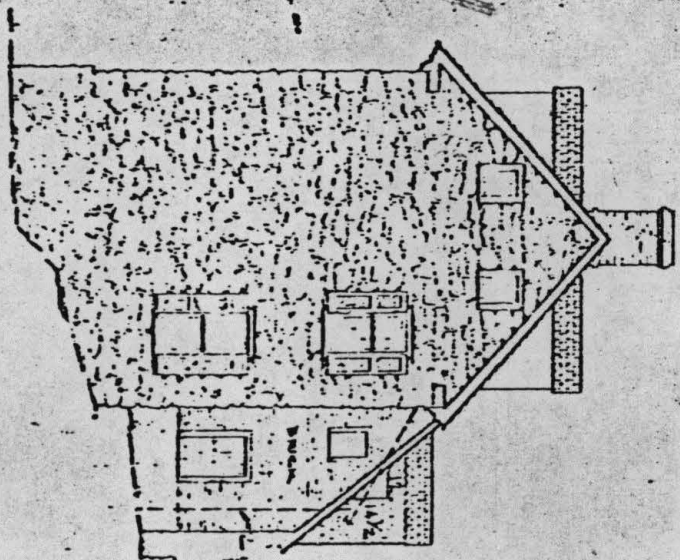


CORNICE: WEST ELEVATION (MAIN HS.)

Graphic Scale Cornice



SOUTH ELEV.
Scale: 1/8" = 1'-0"



NORTH ELEV.
Scale: 1/8" = 1'-0"

Called W. 17311's, L.S.I.

MISSION AS PROJECT ... TO CONSERVE AND ENLARGE
THE HISTORICAL RECORDS THROUGH GRAPHIC RECORDS
AND TO PRESERVE THE INTEREST OF THE PEOPLE AND THE
COUNTRY THROUGH THE STUDY OF THE PAST AND THE PRESENT

OCOCOQUAN

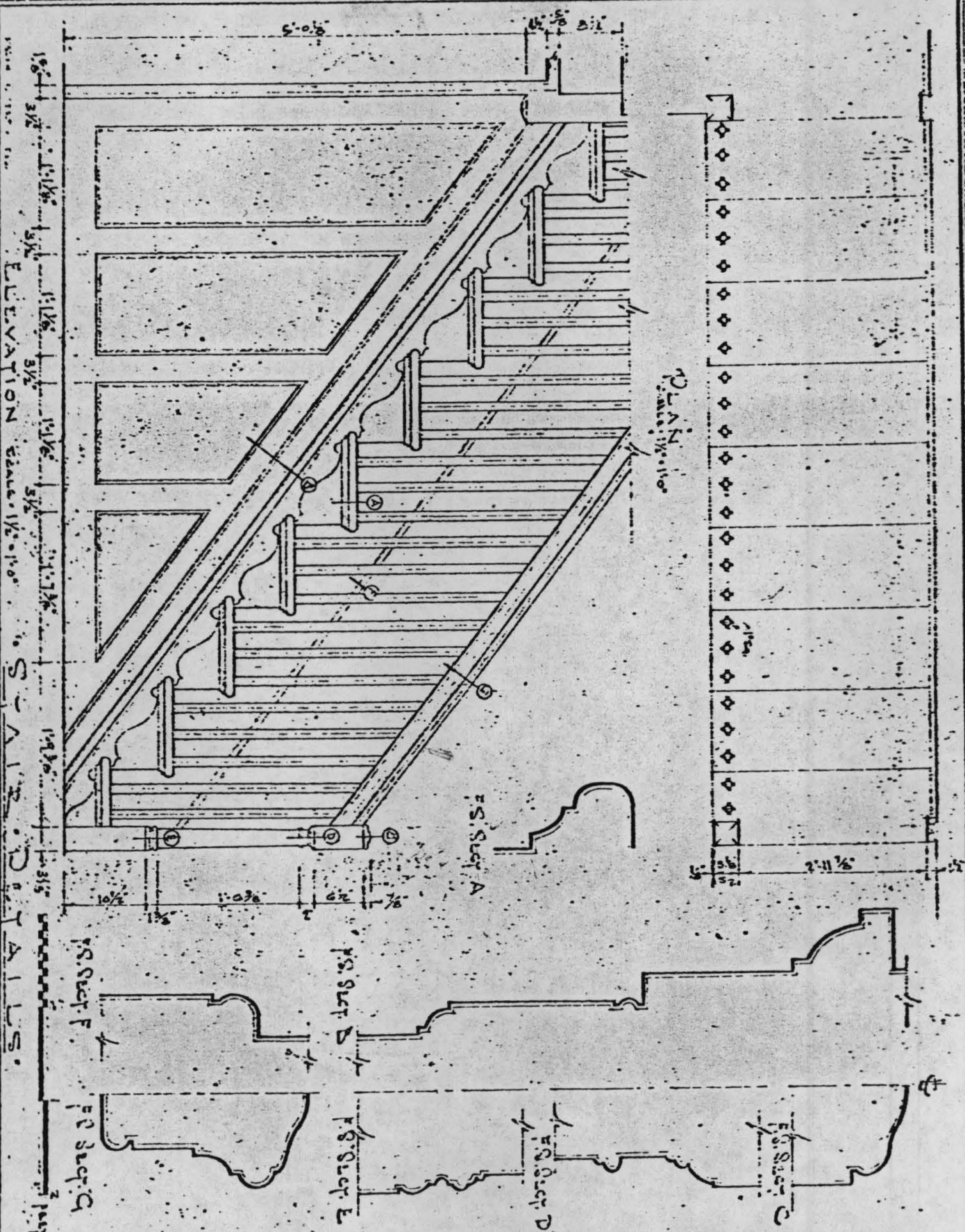
ROCKLEDGE
PRINCE WILLIAM COUNTY

VA
577

HISTORIC AMERICAN
BUILDINGS SURVEY
SHEET 7 OF 11 SHEETS

Graphic Scale

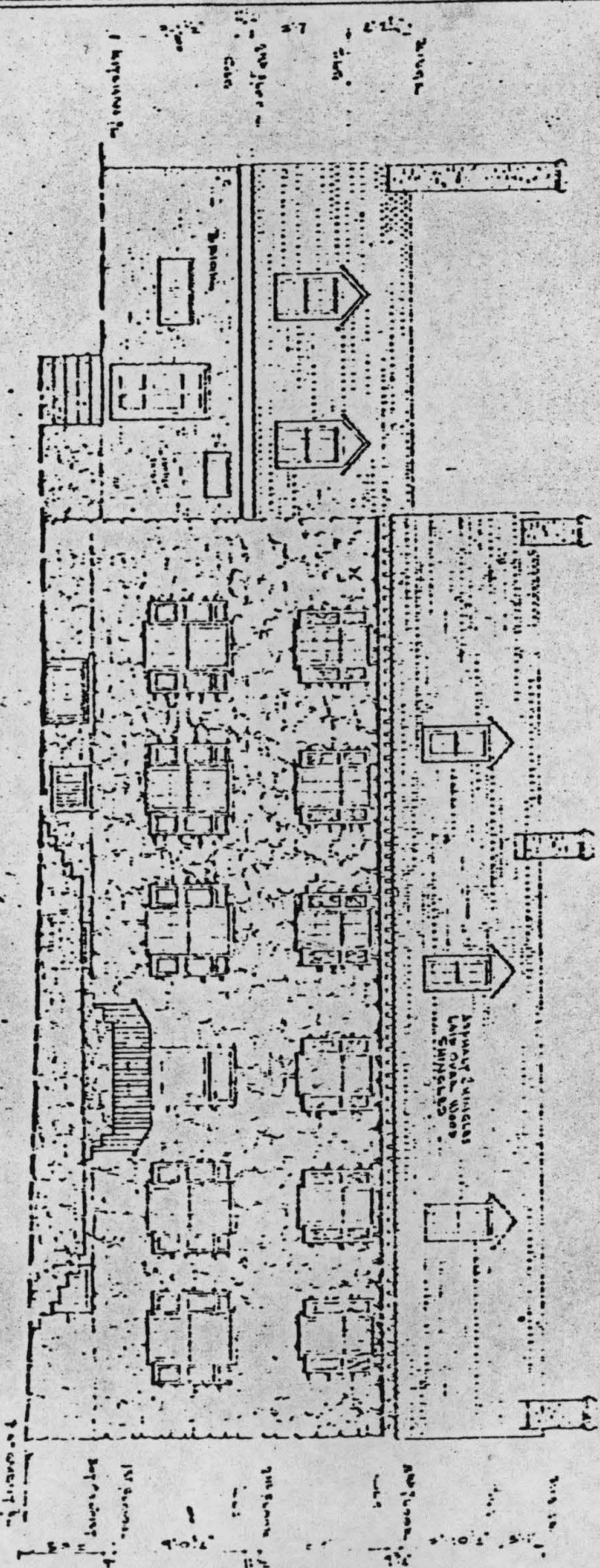
PLAN
Scale 1/8" = 1'-0"



ELEVATION Scale 1/8" = 1'-0"

DIVISION OF PROTECTIVE... TO CORRECT... AMERICAN
 AN HISTORICAL SOCIETY... 1800 N. 18th STREET, N. W. WASHINGTON, D. C. 20036
 THE HISTORIC AMERICAN BUILDINGS SURVEY... SHEET 2 OF 11 SHEETS

OCCOQUAN
 ROCKLEDGE
 PALMER WILLIAM COUNTY
 VIRGINIA
 577



EAST ELEVATION
SCALE: 1/8" = 1'-0"

MINOR PART

WITH M. P. 1257, ET.

DESIGNED BY PROJECT... TO CONSULT ARCHITECTS
ARCHITECTURAL MEMORANDUMS OF EASTON, M. 10333
DESIGNED BY PROJECT... TO CONSULT ARCHITECTS
ARCHITECTURAL MEMORANDUMS OF EASTON, M. 10333

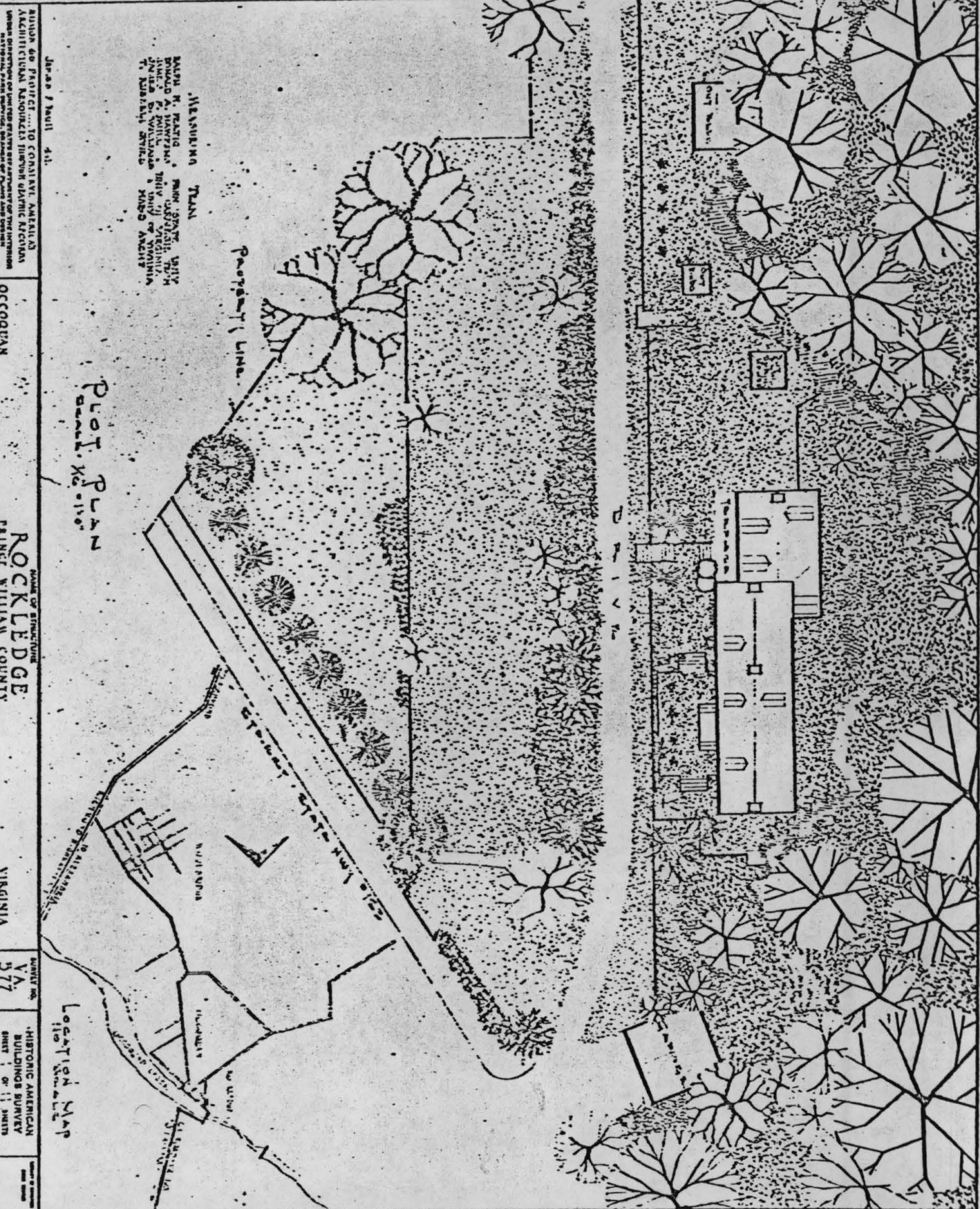
OCCHOQUAN

ROCKLEDGE
PRINCE WILLIAM COUNTY

VIRGINIA

VA
571

HISTORIC AMERICAN
BUILDINGS SURVEY
SHEET 5 OF 11 SHEETS



MEASUREMENT TAKEN
 BY
 RALPH H. PLATTIG, ARCHT. ENGR. V. 1917
 JAMES A. HAWTHORN, JR., ARCHT. ENGR. V. 1917
 JAMES R. DAVIS, JR., ARCHT. ENGR. V. 1917
 T. HUBBARD STILES, ARCHT. ENGR. V. 1917

Proposed Line

Plot Plan
 Sheet No. 110

James F. Bull 411
 BUILDING DEPARTMENT... TO COMMISSIONER AMERICAN
 ARCHITECTURAL ASSOCIATION THROUGH GEORGE M. COLEMAN
 ARCHT. ENGR. N. Y. 1917

OCCOQUAN

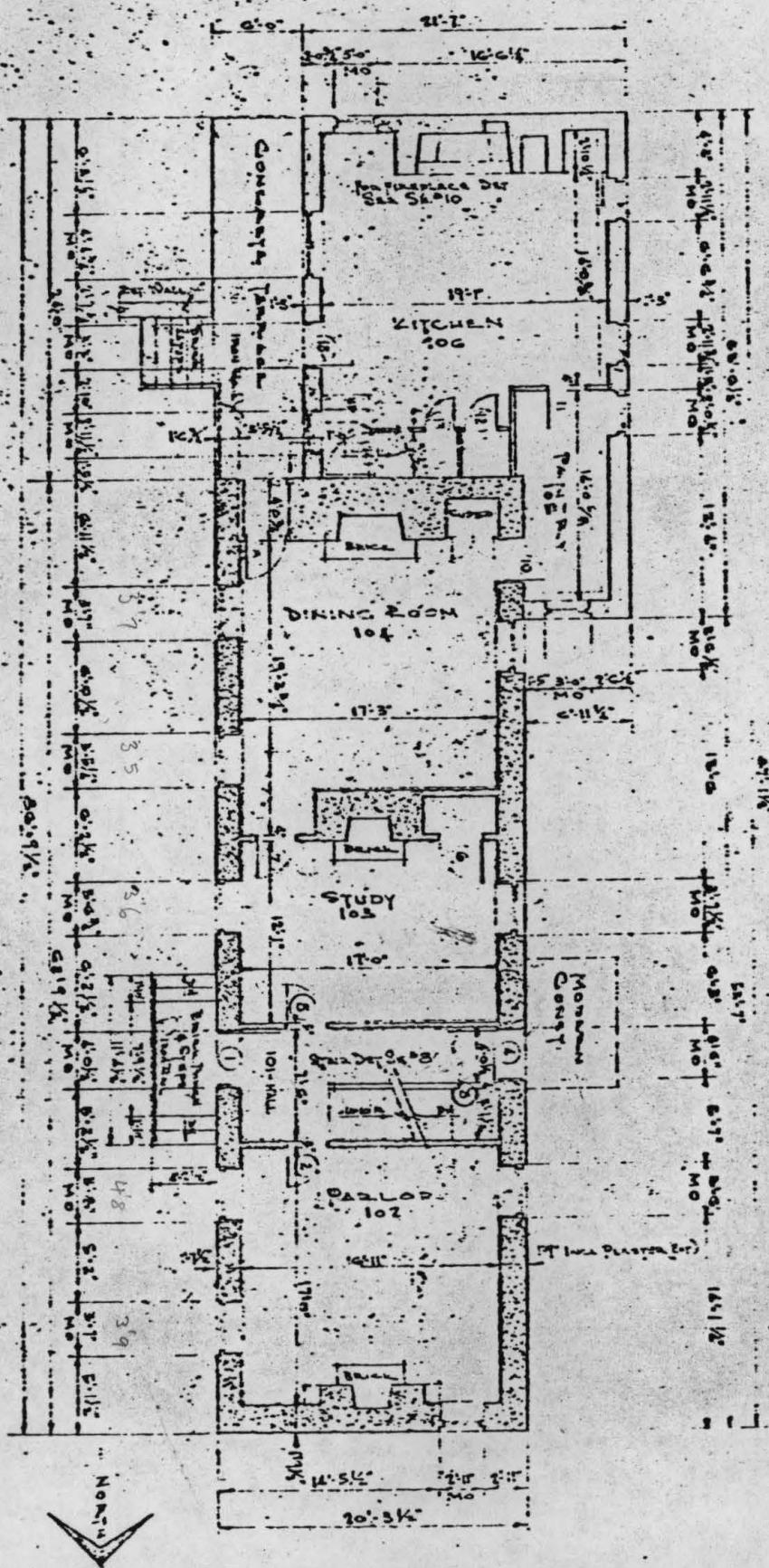
ROCKLEDGE
 PRINCE WILLIAM COUNTY

VIRGINIA

SHEET NO.
 V.A.
 577

HISTORIC AMERICAN
 BUILDINGS SURVEY
 SHEET 1 OF 11 SHEETS

Location Map
 110



FIRST FLOOR PLAN

VISION OF PROJECT... TO CONSERVE ARCHITECTURAL RESOURCES AND PRESERVE HISTORIC CHARACTERISTICS

ROCKLEDGE
PRINCE WILLIAM COUNTY

VIRGINIA

HISTORIC AMERICAN BUILDINGS SURVEY

Sheet 2 of 11 sheets

DOOR NO.	WIDTH	HEIGHT	TYPE	DOOR NO.	WIDTH	HEIGHT	TYPE
1	3'-0 1/2"	6'-4 1/2"	A	16	2'-4 1/2"	6'-4 1/2"	B
2	3'-0 1/2"	6'-4 1/2"	A	17	2'-10"	6'-5 1/2"	B
3	2'-7 1/2"	5'-1 1/2"	A	18	2'-10 1/2"	6'-3 1/2"	B
4	2'-1 1/2"	5'-7 1/2"	B	19	3'-0"	6'-7 1/2"	B
5	2'-7 1/2"	6'-1 1/2"	B	20	3'-10 1/2"	6'-4 1/2"	B
6	2'-9 1/2"	6'-1 1/2"	B	21	2'-5 1/2"	6'-6 1/2"	B
7	2'-10"	6'-2 1/2"	B	22	2'-2 1/2"	6'-2 1/2"	B
8	2'-5 1/2"	6'-0"	A	23	2'-0 1/2"	6'-3 1/2"	B
9	2'-5 1/2"	6'-3 1/2"	C	24	2'-9 1/2"	6'-3 1/2"	B
10	2'-10 1/2"	6'-0 1/2"	B	25	2'-7 1/2"	6'-0 1/2"	B
11	2'-9 1/2"	6'-4 1/2"	D	26	2'-15"	5'-10 1/2"	D
12	2'-0 1/2"	5'-10 1/2"	B	27	2'-5 1/2"	6'-1 1/2"	F
13	2'-0"	4'-0"	A	28	6'-5"	2'-3 1/2"	D
14	2'-0 1/2"	5'-5"	E	29	6'-5 1/2"	2'-4"	D
15	3'-1"	6'-4 1/2"	H	30	5'-9 1/2"	2'-0"	G
16	2'-4 1/2"	6'-4 1/2"	B	31	6'-2 1/2"	2'-5 1/2"	D

DOOR SCHEDULE TABLE



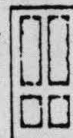
TYPE E



TYPE F



TYPE G



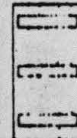
TYPE A



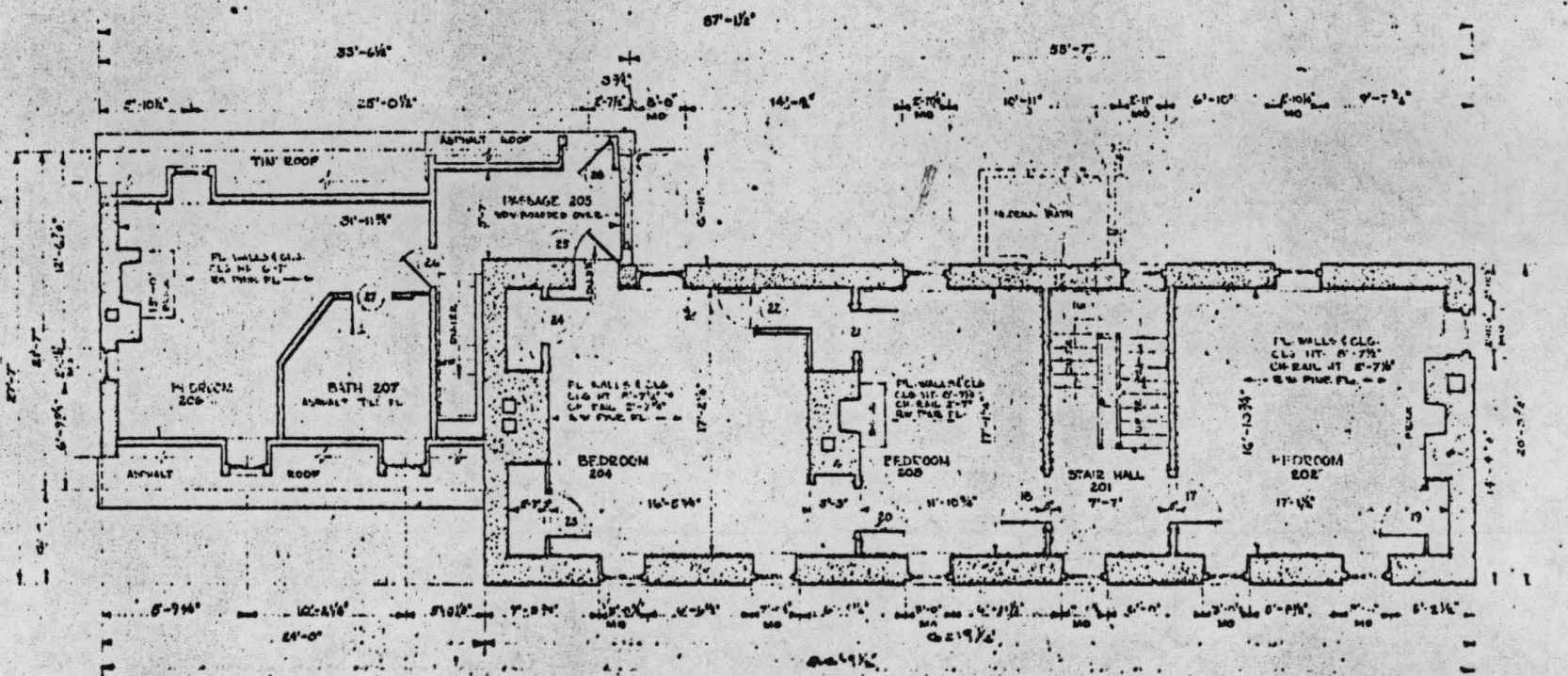
TYPE B



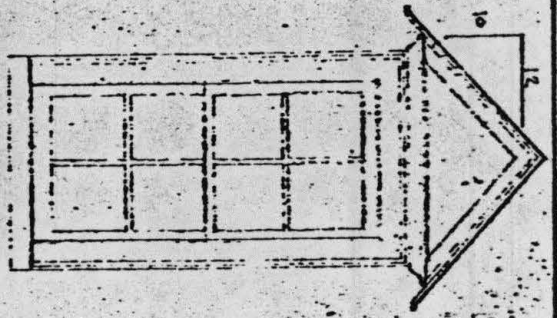
TYPE C



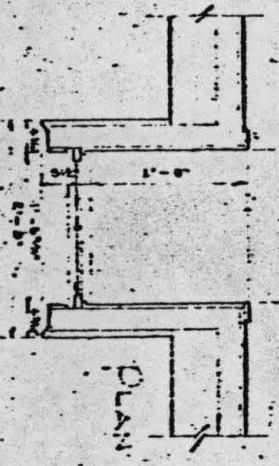
TYPE D



SECOND FLOOR PLAN

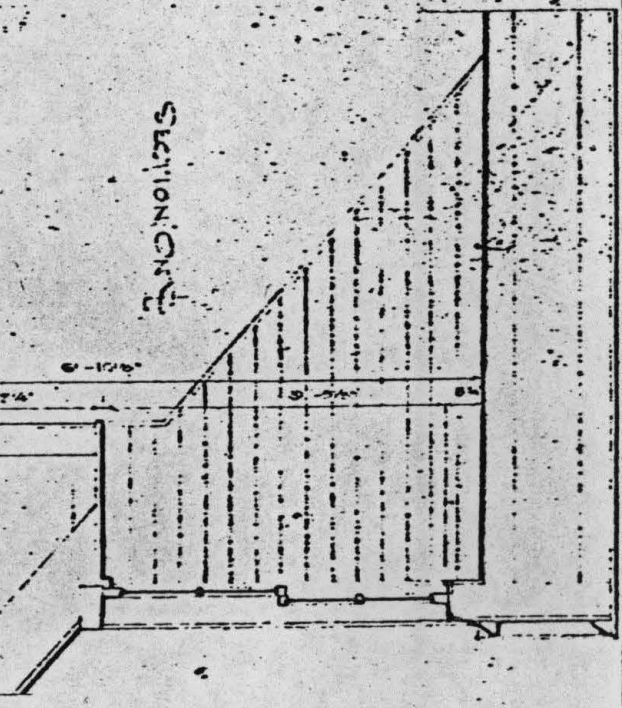


ELEVATION

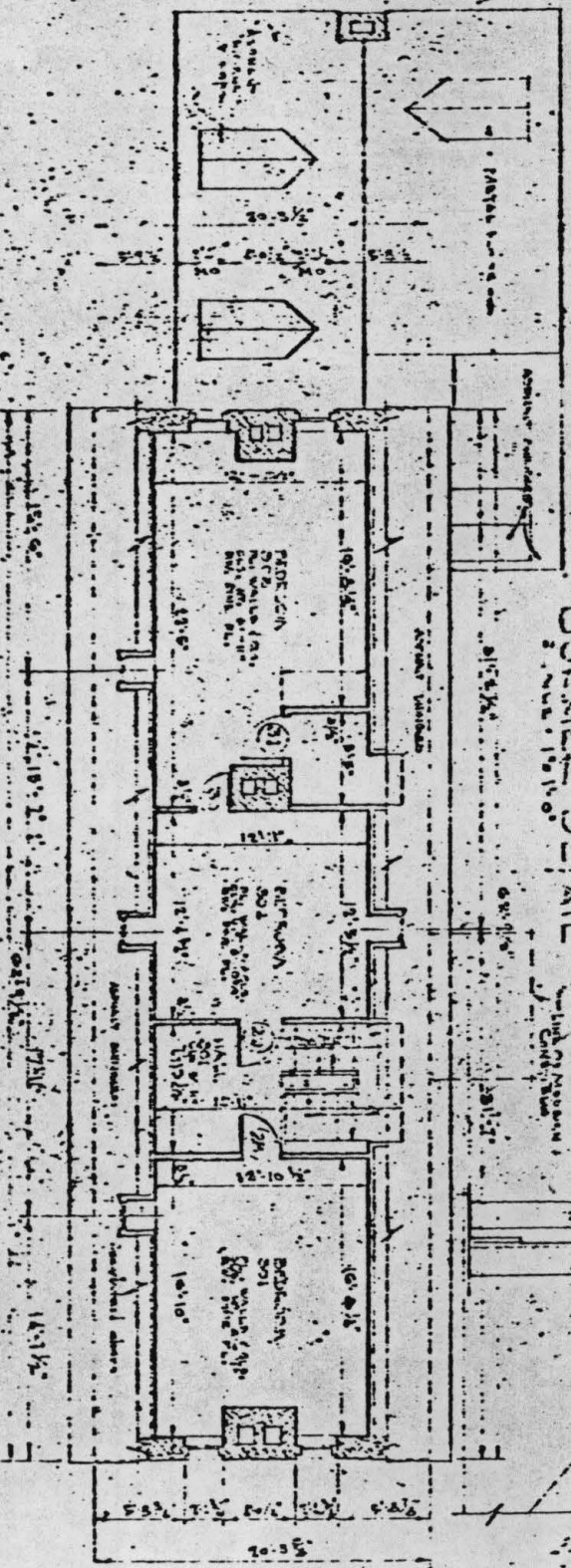


PLAN

DOOR DETAIL



SECTION ONE



FLOOR PLAN



James T. Paul, d.d.

MISSION IS DESIGN... TO COMBINE AMERICAN ARCHITECTURE WITH THE BEST OF EUROPEAN ARCHITECTURE

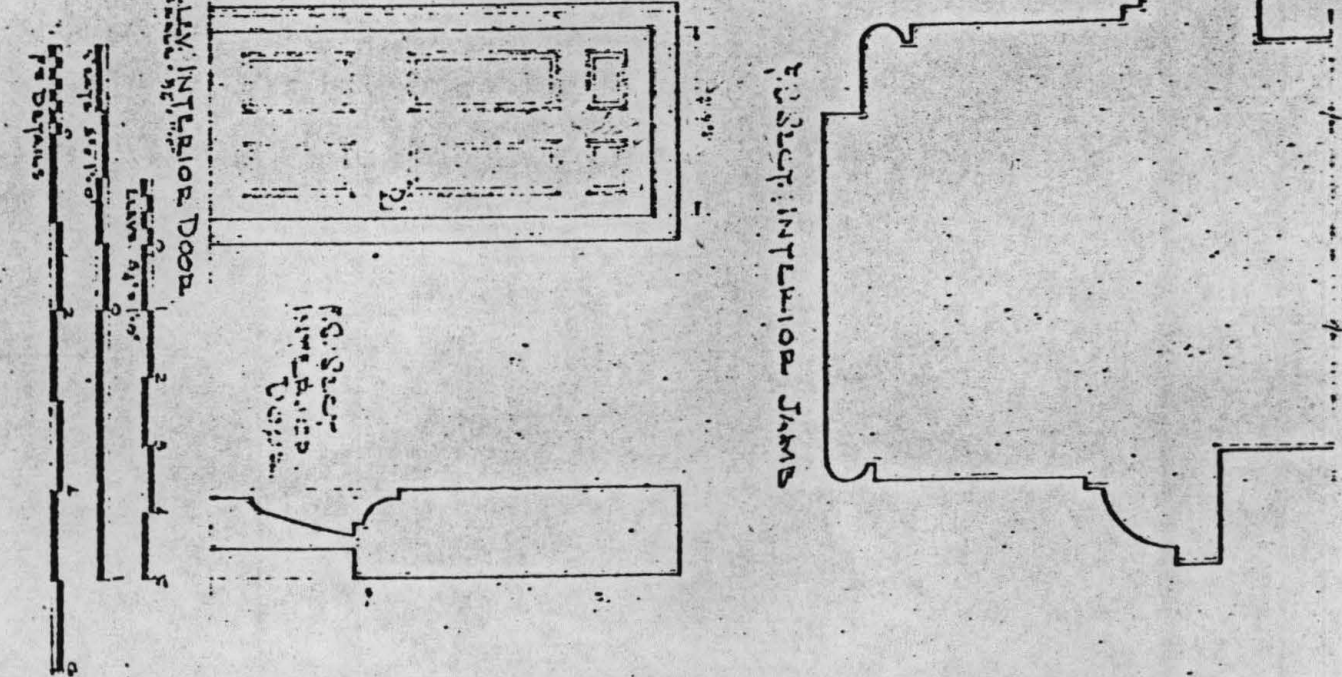
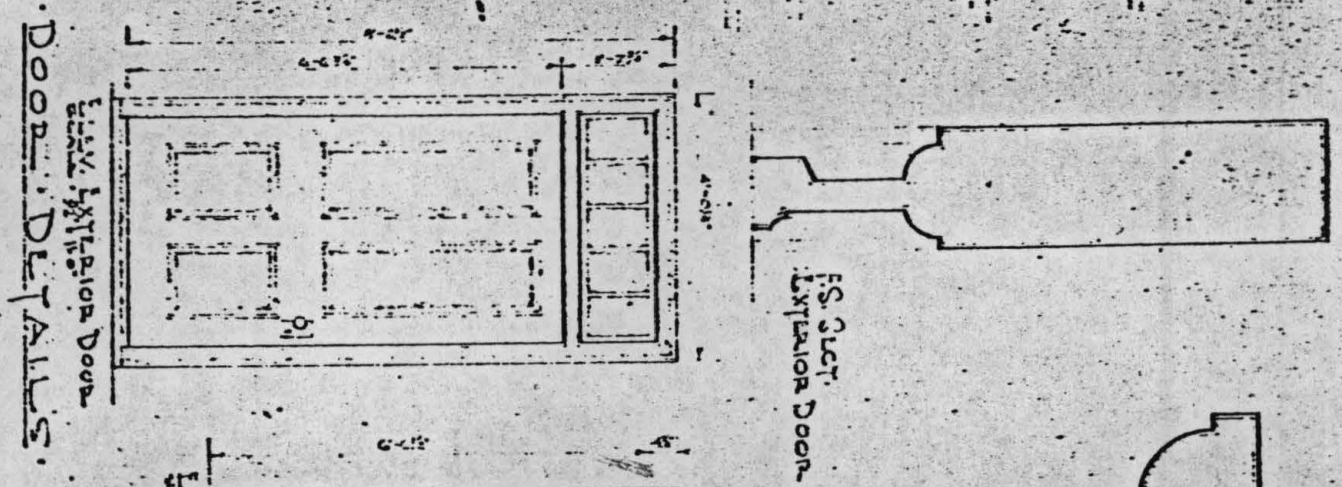
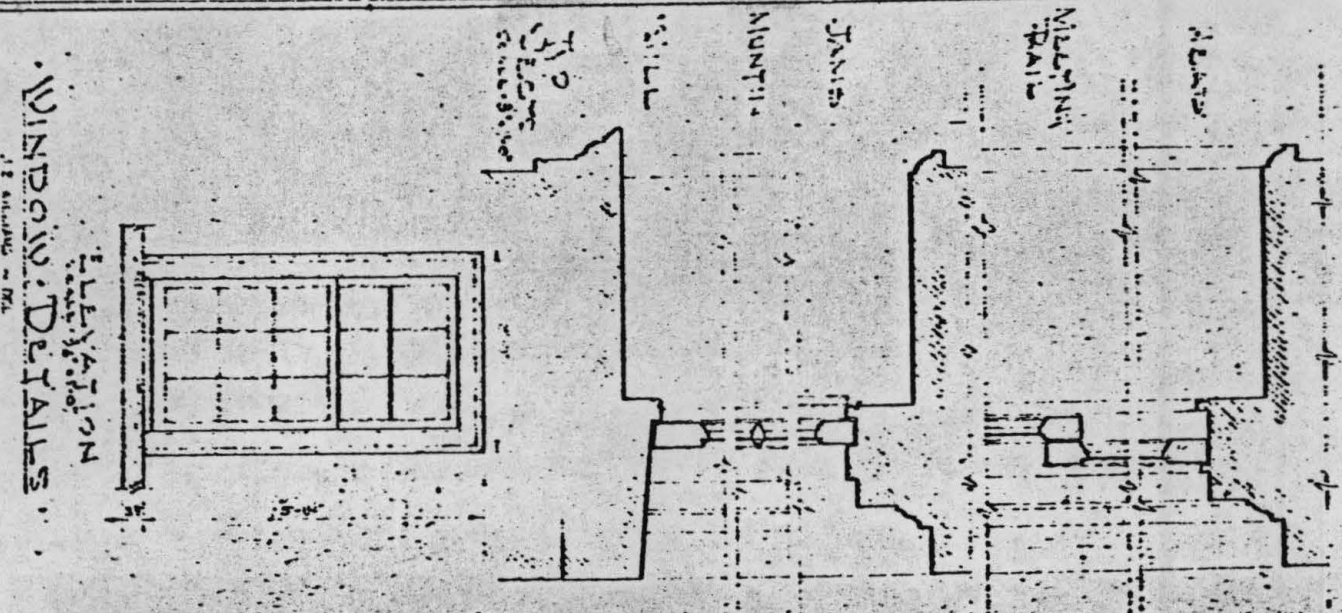
OSCOGAN

ROCKLEDGE
FIRST WILLIAM COUNTY

VIRGINIA

577

HISTORIC AMERICAN SURVEYS



WINDOW DETAILS

DOOR DETAILS

MISSION BY PROJECT... TO CONSERVE AMERICAS
 HISTORICAL ARCHITECTURAL RECORDS

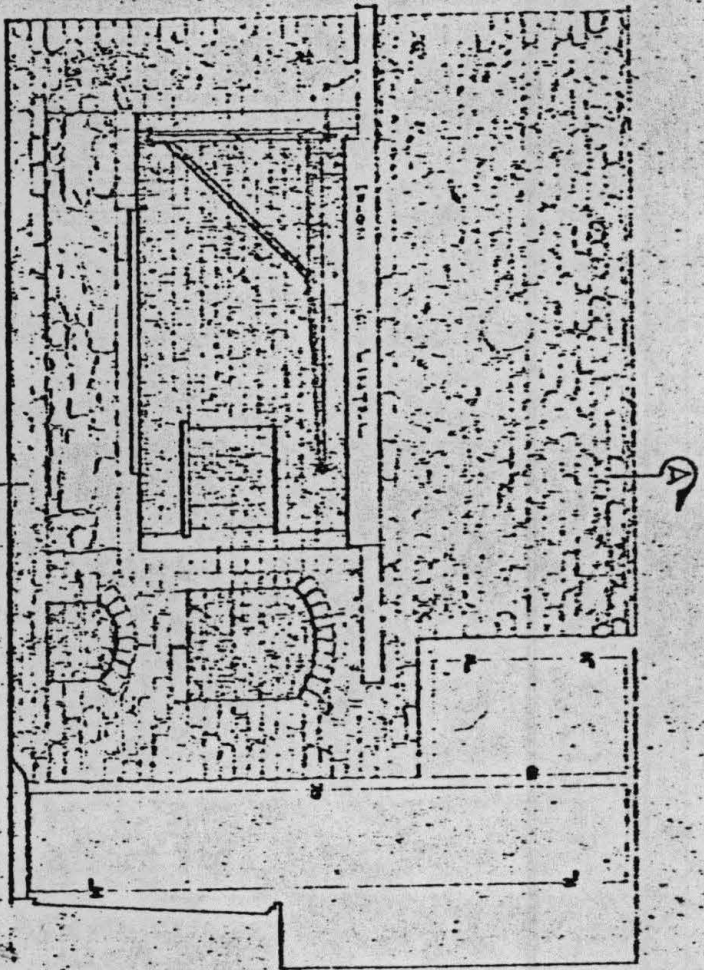
ACCOQUAN

ROCKLEDGE
 PRINCE WILLIAM COUNTY

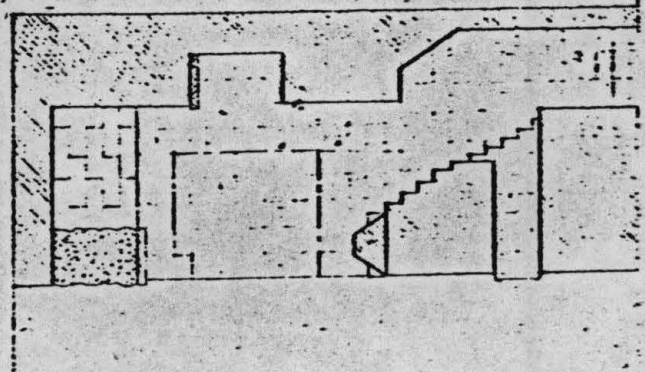
VIRGINIA

577

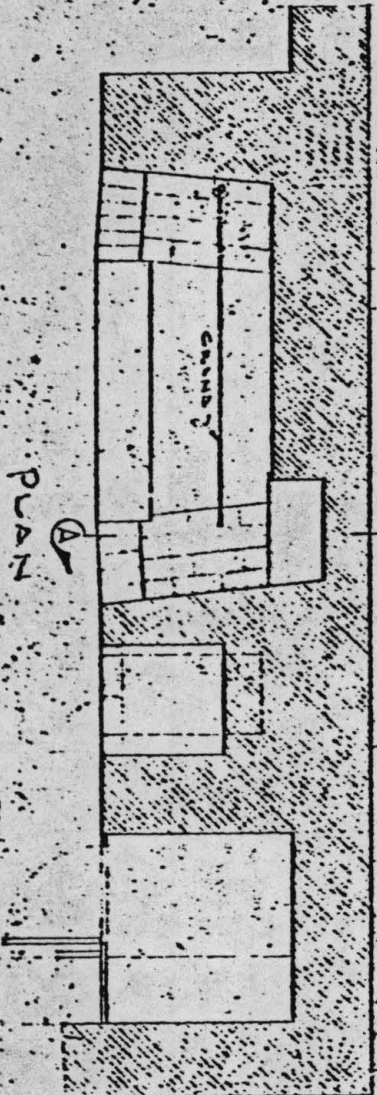
HISTORIC AMERICAN
 BUILDINGS SURVEY



ELEVATION



SECTION AA



PLAN

ROCKLEDGE
F.A. ROBERTSON ARCHT. & ENGRS.
F.A. ROBERTSON ARCHT. & ENGRS.
F.A. ROBERTSON ARCHT. & ENGRS.

Donald A. Allen, Dist. Del.

DIVISION OF FACILITIES TO CONSERVE VIRGINIA'S
HISTORIC ARCHITECTURE
HISTORIC ARCHITECTURE
HISTORIC ARCHITECTURE

ROCKLEDGE

ROCKLEDGE
PRINCE WILLIAM COUNTY

VIRGINIA

577

HISTORIC AMERICAN
BUILDINGS SURVEY
SERIES 10 OF 11 SHEETS

F.S. DETAILS - FIRST FLOOR
CHAIR RAILS

